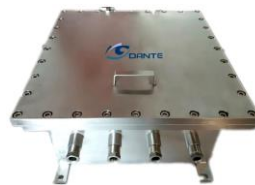
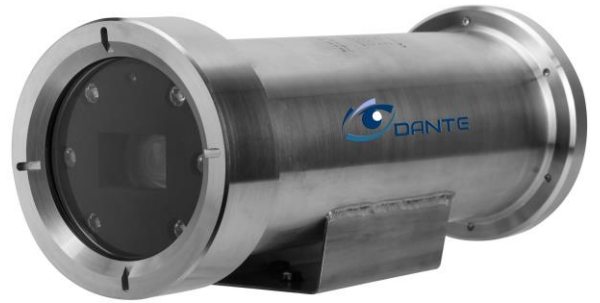


DNA6716YM 2MP 30x D/N Explosion Proof IR Zoom Camera System Analytics



DESCRIPTION

DNA6716YM are 1/2.8" 2MP Day/Night, 30X optical and 16x digital zoom, Network-ready, Explosion proof, IR Zoom Camera Systems that represent state-of-the art, rugged design, surveillance technology. Units are designed with quality Encoder H.264 / H.265 / MJPEG video compression and triple stream outputs at 50/60fps 2MP(1080p); feature motorized zoom lens, receiver/driver, true WDR(120dB, intelligent analytics (IVS) and LED IR Illuminator for up to 100m night vision. Included are Audio in/out, 2 Alarms in/2 out, RS-485, OSD menu with programmable functions WB, AGC, BLC, ultra 3DNR, SS316L housing construction and IP68 rating. With 100-240VAC, POE option, Web and Client Software, Smart Phone interface, the Network DNA6716YM Series Explosion Proof IR Zoom Camera Systems are designed to meet demanding commercial, industrial and environmental IP video surveillance installations.



Junction box



Wall Bracket



FEATURES

- * IP 2.0MP IR Explosion Proof Camera System
- * CMOS Progressive Scan Sensor; true WDR
- * H.264/H.265/MJPEG; triple Stream Encoder
- * 10/100 Mbps, RJ-45 Port Ethernet Port
- * Motorized Lens with 30x Optical Zoom
- * Hardened Glass Material in Camera Housing
- * Features LED IR Illuminator/100m Nigh Vision
- * RS-422/485 Rec./Driver with P/D protocol
- * Analytics Option: Tripwire, Perimeter protection Face Detection, Abandoned, Missing Objects
- * 2 Alarms in/2 out; 1 Audio input/1 output
- * Audio In/Output, RS-485 Data Port
- * Smart Phone - iPhone, iPad and Android
- * Stainless Steel 316L Construction Materials
- * 100-240VAC Input Voltage; POE option
- * Ethernet, Surge Protection; SD Card (128GB)
- * Corrosion Resistant, Marine Housing IP68
- * Comply CE, ROHS, ONVIF, ATEX, IEC ExdIICT6

APPLICATIONS

- * Homeland Security
- * Correctional Centers
- * Petrochemical Industry
- * Marine Environments
- * Government and Military
- * Power Generating Plants

ORDERING INFORMATION

DNA6716YM23AE5 Network 2MP Explosion Proof IR Zoom 30X, IR 100m, NTSC, IP68, 100-240VAC

DNA6716YM23BE5 Network 2MP Explosion Proof IR Zoom 30X, IR 100m, PAL, IP68, 100-240VAC

DZ1880 Wall Bracket with Stabilization plate; DZ6705-xxx Explosion Proof Junction Box



www.dantesecurity.net

Lynbrook, NY USA

sales@dantesecurity.net

DNA6716YM

2MP 30x D/N Explosion Proof IR Zoom Camera System Analytics



Video Specifications

Video Output: NTC/PAL
Ethernet Port: 10/100Mbps RJ-45

Audio Specifications

Audio Compression: G711a/u(32kbps), PCM(128kbps)
Interface: Terminal Block in/out

Data Specifications

Receiver/Driver: Built-in for Zoom Lens
Data Interfaces: RS-422/RS-485
Protocol/Baud Rate: Pelco D, 2400

General Parameters

Optical/Digital zoom: 30x /16x
Privacy Masks: up to 24
Motion Detection: Supports
Alarm Inputs/Outputs: 2 in; 2 out

Electrical Parameters

Voltage/Consumption: 100-24VAC; 25W IR ON
IR Distance: LED 100m Night Vision

Mechanical Parameters

Construction: Stainless Steel 316L grade
Dimensions L x H x Di: 15.7"(400mm), 5.9"(150mm)
7.7"(145mm)
Weight (Net/Gross): 20lbs(9Kg) / 24lbs(10.5Kg)

Environmental Parameters

Operating Temperature: -40°F ~ +140°F (-40°C ~ +60°C)
Storage Temperature: -40°F ~ +176°F (-40°C ~ +80°C)
Humidity: 0~95% (Non-condensing)

Regulatory Compliance

ATEX, IEC ExdIICT6; Marine Design
Housing, ONVIF, CE, ROHS, IP68
ISO9001

Manufactured to:

Accessories

Wall Bracket: DZ6700-55A
Dual Wall Bracket: DZ6700-65A
Junction Box: DZ6705-xxx
Flexible Ex Proof Cables: DZ6700EXPC

Camera Parameters	DNA6716YM23
Image Sensor	Progressive Scan Exmor 1/2.8" CMOS
Effective Pixels	2.0M (1920 x 1080)
Output Pixels:	1920(H)x1080(V)
FPS:	50/60 @1080P / 720P / D1(704x576,704x480), CIF
Min. Illum. F1.6, 50 IRE:	Color 0.005Lux/F1.6/0Lux/IR ON
Frame Rate:	1080P/720P(1~30fps); D1(1~30fps)
Optical / Digital Zoom:	30X (F=4.5mm~135mm)
View Angle: Wide x Tele	67.8°(W)~2.4°(T) 30x
F-value:	F 1.6(wide) - F5.0(telephoto) 30x
Focus:	Auto/Manual (Far/Near)
IR Cut Filter Removable:	Auto(ICR) / Color / B/W
Electronic Shutter:	1/1~1/30,000s(NTSC); 1/1~1/10,000s(PAL)
Wide Dynamic Range:	True WDR 120dB
Privacy Masking:	ON/OFF (up to 24 areas)
Noise Reduction:	2D / 3D
Focus Distance:	100m - 1000m
BLC:	BLC / HLC / WDR
White Balance:	Auto/ATW/Indoor/Outdoor/Manual
Encoder/Parameters	DNA6716YM23
Video Compression:	H.264/H.265/MJPEG, triple Stream, Configurable
LAN Interface:	10/100 Mbps RJ-45 Port
Output Bit Rate:	Variable Bit Rate (VBR) & Constant Bit Rate (CBR)
Network Interface:	10/100 Mbps RJ-45 Port; Status and Network LEDs
Wireless Network:	IEEE 802.11a/b/d/e/g/h/i, 802.11n
Network Protocol:	IPv4/IPv6, HTTP, HTTPS, SSL, TCP/IP, UDP, UPnP, ICMP, IGMP, SNMP, RTSP, RTP, SMTP, NTP, DHCP, DNS, PPPOE, DDNS, FTP, IP Filter, QoS, Bonjour
Web Server:	Intuitive Browser Interface, Internet Explorer
Operating System:	Compatible with DNA3700, DNA3750, DNA3800, DNA4000 and DNA5000 Series NVR Server Appliances; WIN 8/WIN10 servers
CPU Requirement:	Intel Core 4 Quad 2GHz or higher for Client

