

# DNB3700DF IP 4K Video Face Detection & Recognition Linux OS NVR Appliance 8 HDD, 3 x HDMI



## DESCRIPTION

The DNB3700DF Series is a LINUX OS based, Professional IP Management and Network multi-channel Face Detection, Recognitions Database and Video Recording (NVR) Appliance System with 128 IP Camera inputs; 400Mbps incoming bandwidth, 320Mbps recording and 64Mbps playback. Compatible with H.265/H.264/MPEG4/MJPEG Face detection IP Cameras. Features include up to 20 Databases, Quad Core CPU, 3xHDMI, 2xVGA, 8 HDD, 1 Audio in/2 out, 16 Alarms in/8 Relays out, RS-232, RS-485 Data, 4 USB, 1 eSATA, 4 x 1000Mbps RJ-45 load balancing ports and Raid 0/1/5/6/10. With Management Server, PC Client, Web, Smart Phone Interface, ONVIF compliance, DNB3700DF Series are advanced solutions for commercial and industrial, IP video Face Detection and Recognition installations.



## FEATURES

- \* Face Detection and Recognition, Quad Core Intel NVR Database Appliance/Management
- \* Up to 20 Face Databases; 100,000 faces
- \* H.265/H.264/MPEG4/MJPEG Decoding
- \* 128 Inputs; to 12MP Resolution; 8 HDD
- \* 3xHDMI(up to 3840x2160); 2 VGA Ports
- \* 4Ch Video Stream Face Recognition
- \* 10ch picture stream Face Recognition with Face Detection Network Cameras
- \* Structured Data for Gender, Age, Expression
- \* 10 Face Image Targets simultaneous search
- \* RS-232 (Keyboard); RS-485 PTZ Controls
- \* 4x1000MBps RJ-45 Ports – Load Balancing
- \* Audio in/out; 4 USB, 1 eSATA USB Ports
- \* 16 Alarms Inputs and 8 Relay Outputs
- \* Smart Phone: iPhone and Android
- \* Compliance with CE, FCC, ROHS and ONVIF

## APPLICATIONS

- \* Homeland Security
- \* Correctional Centers
- \* Petrochemical Industry
- \* Corporate and Banking
- \* Casinos and Hospitality
- \* Health Care Centers
- \* Schools and Universities
- \* Government and Military
- \* Power Generating Plants
- \* Traffic Surveillance (ITS)

## ORDERING INFORMATION

DNB3700DF-128 Face Detection/Recognition NVR, 128 IP inputs; Audio, Alarms, 4x1000Mbps RJ-45

## Mechanical, Electrical Specifications

Dimension (H x W X D): 91mmx440mmx446mm 3.5" (2U) x 17.3" x 18" x 2U

Weight not including H/D: Net 18.9 lbs. (9 Kg) - no HDD

Power Supply: 100-240VAC, 50/60Hz, 17W - no HDD

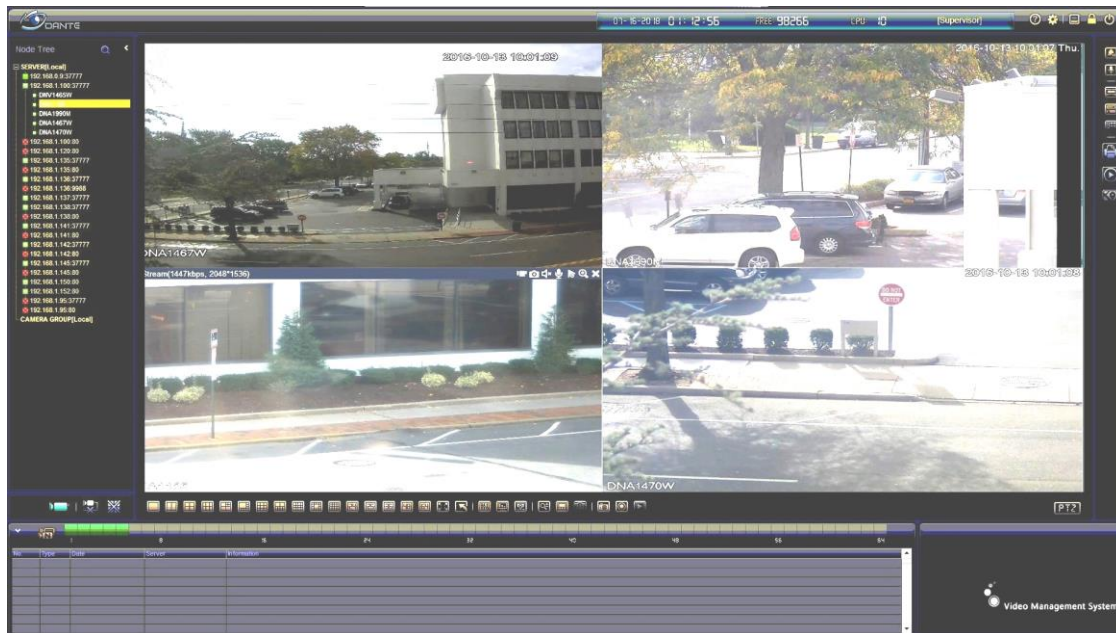


[www.dantesecurity.net](http://www.dantesecurity.net)

Lynbrook, NY USA

[sales@dantesecurity.net](mailto:sales@dantesecurity.net)

# DNB3700DF IP 4K Video Face Detection & Recognition Linux OS NVR Appliance 8 HDD, 3 x HDMI



## FEATURES OF NVR AND CLIENT SOFTWARE

- \* Multi-Screen, Friendly, Graphic User Interface (GUI) Client software for up to 128 IP Inputs
- \* Up to 20 Face Databases with total 100,000 faces. Detects stranger's faces not registered in Database
- \* 4ch video stream face recognition / 10ch picture stream face recognition; 10 face images /sec. processing
- \* Up to 10 target face images search at same time. Support similarity threshold set for each target face image.
- \* Name, gender, birthday, nationality, address, ID information can be added to each face picture.
- \* Connects to ONVIF compatible Network Camera Brands 12MP, 8MP, 5MP, 4MP, 3MP, 2MP; IP Encoders
- \* Supports Smart Phone and Appliances: iPhone, iPad and Android
- \* Supports Administrator login rights for configuration and maintenance; Multiple Users with Passwords and Multiple user control modes with assigned rights such as live view only, or live and recorded view; PTZ controls
- \* Features Video display Split as: first screen up, 64 on 64ch, 36 on 32ch, 16 on 16ch; second screen up to 16ch
- \* Device management such as add or delete, bidirectional talk, video monitoring project, layout configuration
- \* Supports configuration of PTZ, bidirectional talk, camera settings, color adjustments
- \* PTZ controls with Direction, Pan, Tilt, Zoom, Focus, Iris, Presets, Tours, and Patterns
- \* Supports Live Monitoring from Snapshot and Local Record; Pre-Alarm Recording function
- \* Supports Video Search and Playback from Local PC, DVRs, NVRs, or Storage Devices
- \* Supports incoming bandwidth 400Mbps and 320Mbps recording; 12MP playback resolution
- \* Supports Camera Blank based on Time of Day, Alarms, Auto Notification, Scheduled Action
- \* Connects to Digital Matrix Platform Displays Appliances for Video wall
- \* Supports various types of Alarms including External, 396 Motion Detection Zones, Video Loss, Camera Masking, based on Time of Day, Date with Auto Notification and Scheduled action
- \* Features Warning Sound or Message from Alarms
- \* Features exporting the Alarm information to peripheral Devices for Extended Uses
- \* Supports e-map for End User to view all device locations with CMS
- \* Features unlimited number of Map Groups and 64 sub-map Layouts with JPEG and BMP with CMS

## ENVIRONMENT

- \* Client CPU requirement - 2.4GHz or higher; Memory 8GB or higher; Video Memory 2GB, WIN8, WIN10
- \* Resolution Display 3840 x 1260 and lower (1920x1080 - 1080p)

